



10 Atherton Close Rankin Park NSW

4 2 2

PREMIER LOCATION - FLAWLESS PRESENTATION

Nestled in one of the best tree lined streets in Rankin Park you will find this stylishly renovated brick & tile family home. Savor the peace and serenity offered in this popular no through road with an abundance of native birdlife.

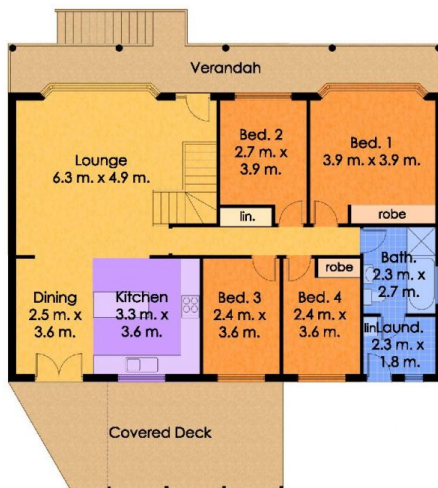
Surrounded by quality homes this property is conveniently close to John Hunter Hospital and is in the catchment for New Lambton Primary School and Lambton High School.

As you enter this home you will instantly feeling better as this home will surely impress and relax you. Flowing from the living room through to the new entertaining deck at the rear.

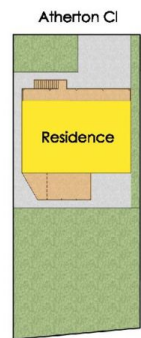
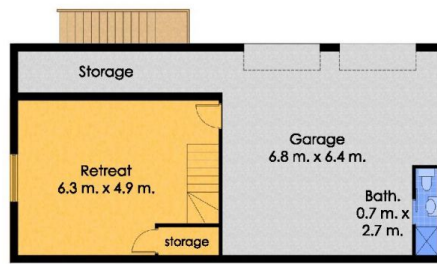
Boasting a quality new chefs kitchen with stone benches, glass splashback & European appliances.

Walking down the main hallway of the house is where you will find the 4 bedrooms with 2 of them boasting built-in wardrobes. Further down the hallway you will come across the light drenched main bathroom.

Price : \$ 625,000
Land Size : 682 sqm
View : <https://www.crawfordrealestate.com.au/sale/nsw/newcastle-region/rankin-park/residential/house/5661296>



Upper Floor Plan
Total Internal Floor Area: 185 sqm



Site Plan
Not to Scale



10 Atherton Cl.,
Rankin Park



Measurements and direction of north are approximate and are to be used as a guide only.