



27 Robinson Avenue Lambton NSW

3 2 5

- * Three double bedrooms, main with ensuite
- * Fully renovated Kitchen and Bathroom
- * Two living rooms
- * Spacious laundry with good storage
- * Corner block with tremendous access for cars, caravans and boats
- * Enjoy the outdoor dining areas
- * Approx land size 737 sqm

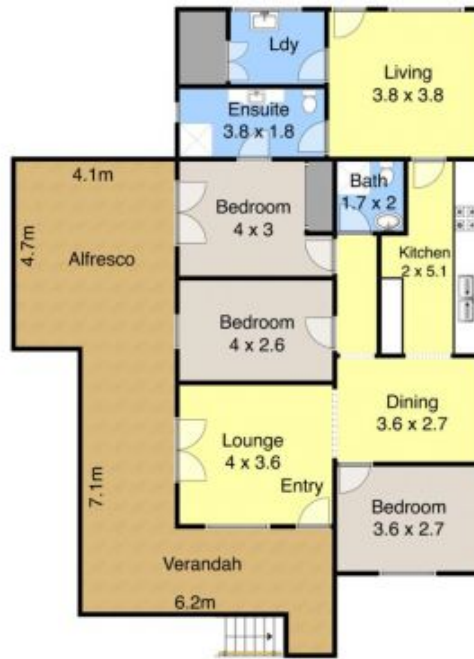
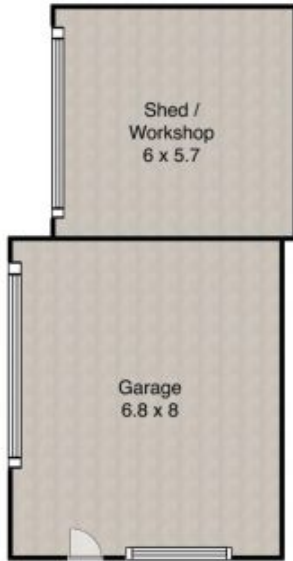
Price : \$ 562,000
Land Size : 737 sqm
View : <https://www.crawfordrealestate.com.au/sale/nsw/newcastle-region/lambton/residential/house/5661485>

Inspection will reveal all.

Robert Crawford 0438 576 166



Robert Crawford
02 4957 6166



Site Plan

27 Robinson Ave,
Lambton

Measurements are approximate and are to be used as a guide only

