





7 Sturdee Street New Lambton NSW

3  1  1 

Framed by a pair of perfectly shaped Teddy Bear Magnolias enter thru the timber arbour and discover the many features of this much loved 3 bedroom family home. Enhanced, extended and enjoyed by the current owners for 38 years you now have the opportunity to raise your family in this highly regarded and convenient enclave.

Price : \$ 810,000
Land Size : 490 sqm
View : <https://www.crawfordrealestate.com.au/sale/nsw/newcastle-region/new-lambton/residential/house/5661628>

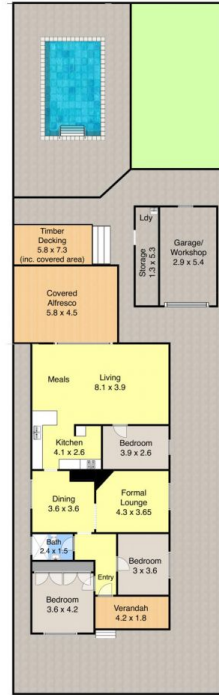
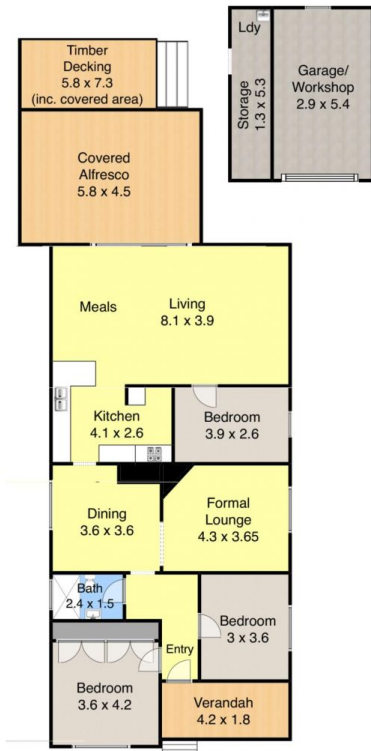
The bull nose front veranda features Federation style tessellated tiles, Traditional double fronted style with two large bedrooms either side of the hallway, the main with a wall of built-in wardrobes, a third bedroom at the back, central updated bathroom with large shower, a separate formal living room, formal dining room adjoining the fabulous near new kitchen featuring Stone bench tops, breakfast bar, dishwasher, gas cook top, wall oven and lots of storage.



Margaret Jensen
02 4957 6166

The generous open plan family room across the rear features exposed rustic timber beams and opens to the inviting covered deck designed for entertaining and family gatherings overlooking the inground pool.

Level block approx. 490sqm with desirable north facing



Site Plan

7 Sturdee Street,
New Lambton



Measurements are approximate and are to be used as a guide only

