



## 59 Marshall Street New Lambton Heights NSW

5 4 2

Truly a masterpiece of striking design, this three-level home is boldly contemporary with its cool resort feel. Designed for the entertainer in mind, it makes a statement in quality and sophistication with an impressive 305sqm of internal space. A breath-taking sanctuary is the result with a premier address of Marshall Street, New Lambton Heights!

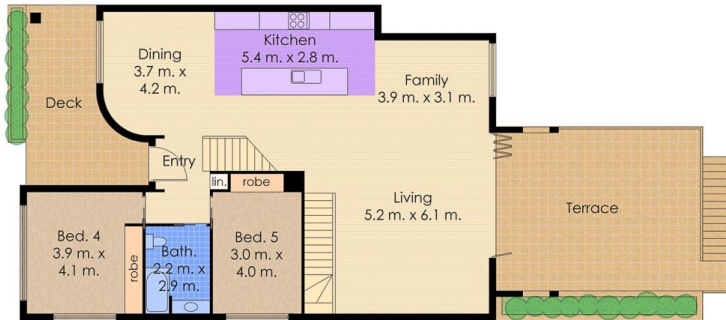
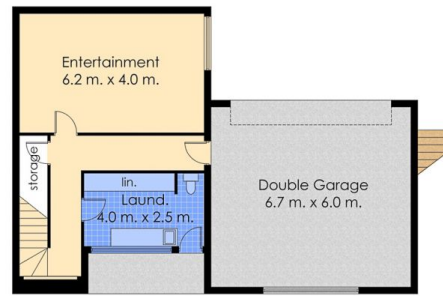
You will be overwhelmed as you walk through the over-sized front door and your eye is immediately drawn to the architecturally designed timber and glass staircase and gourmet kitchen where a stunning Calacutta marble waterfall island bench takes centre stage. Perfectly equipped with high-end Miele integrated appliances, including integrated fridge freezer, dishwasher, gas cooktop, steam oven and warming tray.

Flowing on from the kitchen you will take in breathtaking views through a seven-door stacker which opens to an expansive alfresco terrace tripling your entertaining space & bringing the outside in. Aluminium shutters either side add privacy and a perfectly positioned BBQ nook complete this entertainer's delight.

**Building Size** : 305 sqm  
**Land Size** : 677 sqm  
**View** : <https://www.crawfordrealestate.com.au/sale/nsw/newcastle-region/new-lambton-heights/residential/house/5989036>



**Phil Swan**  
 4957 6166



Total Approx. Internal Floor Area: 305 sqm

**CRAWFORD** 59 Marshall St  
New Lambton Heights

0 m 1 2 3 4 5

Measurements and direction of north are approximate and are to be used as a guide only.