



10A Moonbi Street New Lambton NSW

3 2 2

Offering stylish living on two levels with the ground floor opening to a large rear entertaining deck and including internal access to the auto door garage. Its spacious, it's well designed and the quality of finish is impressive.

Upstairs you will find three large bedrooms with robes, ceiling fans to all, (walk in to Bed 1), a study nook, large fully tiled family bathroom with separate WC PLUS a stylish ensuite and additional storage.

Downstairs you will delight in the open plan kitchen/living and dining opening to the rear deck and fully fenced grassed lawn. Step from the laundry out to the drying area - this home is designed for easy living.

There's the added convenience of a downstairs WC and reverse cycle airconditioning.

An additional car space is located at the end of the drive and the landscaping is all established.

An enviable location , you can walk to shops, clubs, schools and public transport whilst being an easy drive from the city, harbour and beaches.

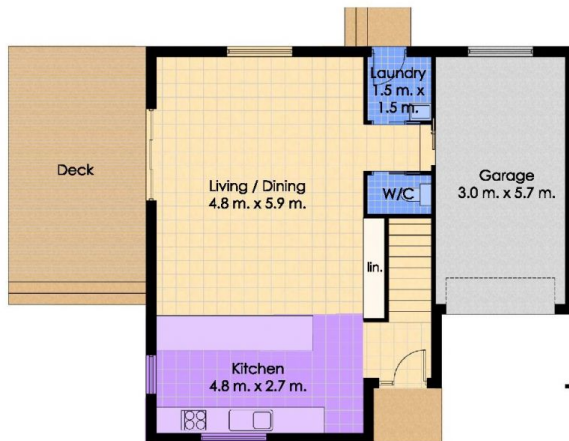
Available 05/10/2022

Land Size : 264 sqm

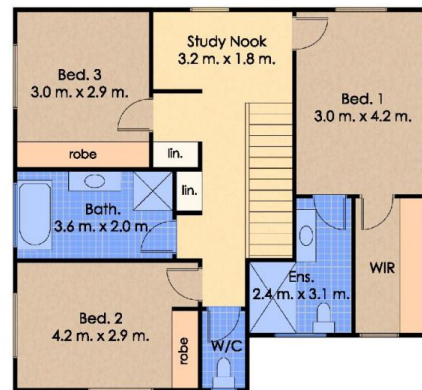
View : <https://www.crawfordrealestate.com.au/lease/nsw/newcastle-region/new-lambton/residential/house/6019155>



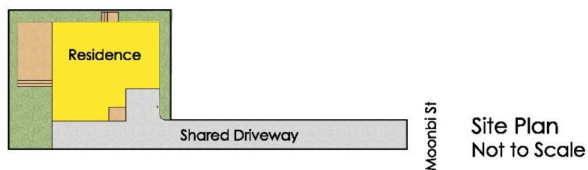
Kerry Robertson
02 4957 6166



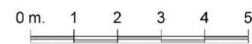
Lower Floor Plan
Total Internal Floor Area: 140 sqm



Upper Floor Plan



10A Moonbi St.,
New Lambton



Measurements and direction of north are approximate and are to be used as a guide only.