



10 Aldyth Street New Lambton NSW

4 2 2

Set high on the hill in the "Panorama Estate" this original Classic Brick Veneer and Tile home is orientated with living areas at the rear to capitalise on the due East aspect offering sweeping views across Novocastrian Park to the city skyline and coastline.

This vintage home complete with a self contained granny flat presents a rare opportunity to reside or invest in this exclusive pocket of this highly desirable suburb.

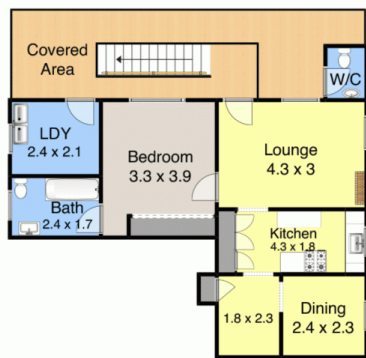
Enter from the tiled front porch to the wide central hallway leading directly to the dining room adjoining the spacious living room and funky kitchen. Sliding glass doors leading to the tiled rear terrace capture the breathtaking views and the cooling breezes.

The main house on the top entry level comprises THREE bedrooms, original retro bathroom and kitchen with dishwasher and gas stove, spacious living room and dining room. Provides internal access from the garage for convenience plus an attached carport and a second entry on the side.

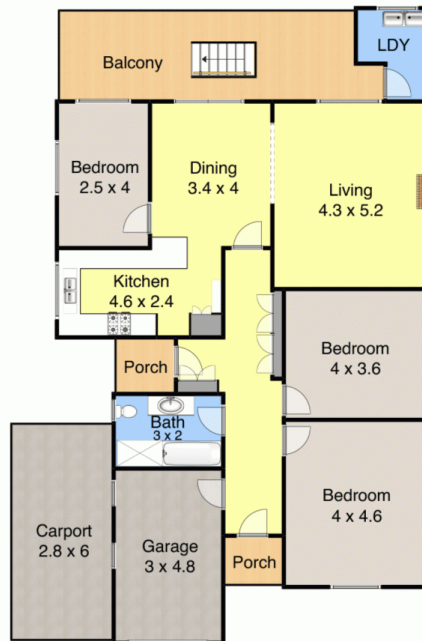
Price : \$ 1,450,000
Land Size : 491 sqm
View : <https://www.crawfordrealestate.com.au/sale/nsw/newcastle-region/new-lambton/residential/house/6826421>



Margaret Jensen
 02 4957 6166



Lower Level



Street Level



Site Plan

10 Aldyth Street,
New Lambton



Measurements are approximate and are to be used as a guide only

CRAWFORD
REAL ESTATE