



12 Jerrawa Close Lambton NSW

4 3 2

*Generous proportions and outstanding accommodation including

*4 bedrooms, plus study/home office, 3 bathrooms including an en-suite

*3 distinct living zones to suit the needs of a growing family.

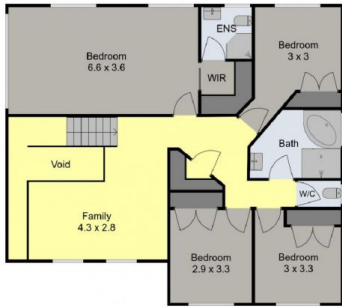
The entry level comprises double front doors to the wide tiled hallway with internal access from the garage, a conveniently positioned home office or 5th bedroom and a generous air conditioned family/tv room with sliding glass doors to the extensive paved outdoor entertaining areas to relax and enjoy al fresco living. The laundry and a 3rd bathroom facility are also on this level.

Step up to the well proportioned kitchen featuring Tasmania Oak cabinetry and solid timber benchtops, 900 mm stainless steel range with gas cooktop, dishlex dishwasher, double fridge space and extensive bench space and storage. The kitchen adjoins the spacious open plan lounge and dining area with lofty raked ceilings, hardwood timber floorboards and access to the front

Price : \$ 1,250,000
Land Size : 546 sqm
View : <https://www.crawfordrealestate.com.au/sale/nsw/newcastle-region/lambton/residential/house/7348497>



Margaret Jensen
02 4957 6166



Upper Level



Street Level



Site Plan

12 Jerrawa Close,
Lambton



Measurements are approximate and are to be used as a guide only

