

**109/29 Taurus Street Elmore Vale NSW**

3  1  1 

3 bedroom townhouse with floating timber flooring in the living area, situated overlooking a grassy embankment and offering a courtyard and designated carport.

**View** : <https://www.crawfordrealestate.com.au/lease/nsw/newcastle-region/elmore-vale/residential/unit/7853303>

- \* AIR CONDITIONED living area
- \* 2nd WC off laundry
- \* Under stair storage PLUS linen storage
- \* Built in robes to Beds 1 and 2
- \* Open plan living/dining/kitchen
- \* Separate shower and bath

Minutes to Elmore Shopping Centre & Elmore Vale Public School

NO PETS

6 OR 12 MONTH LEASE

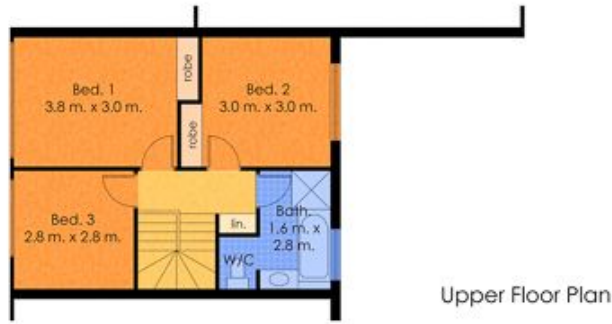
Available NOW



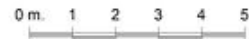
**Amanda Swan**  
02 4957 6166

Crawford applications only, no 1form or 2Apply application accepted.

\* To inspect our properties you must register so we can advise of any changes or cancellations. To register either hit the book inspection button or enquire to be advised of available times. \*Disclaimer: We have obtained all



Lower Floor Plan  
Total Internal Floor Area: 88 sqm



Measurements and direction of north are approximate and are to be used as a guide only.



109/29 Taurus St.,  
Elmore Vale