



13 Hasluck Drive Rankin Park NSW

2 1 2

Comfortable, charming and waiting for new owners to love - that's what you can expect from this solid brick and tile family home on an elevated 670m2 block.

Positioned in peaceful and tree-lined Rankin Park, locals enjoy easy access to schools, parks, Westfield Kotara, Charlestown Square and the beautiful Lake Macquarie. John Hunter Hospital is under 3km away, with Newcastle CBD and beautiful beaches beckoning in approx. 10km.

Featuring:

- Spacious open plan air-conditioned living with amazing bush views
- Functional kitchen includes dishwasher, electric cooking facilities, pantry and enjoys the benefits of overlooking the rear alfresco dining
- 2 bedrooms both with built in wardrobes and balcony to master, perfect for enjoying coffee and reading a book.
- Family bathroom with corner spa bath and double vanity
- Large studio space on the lower level, great for those working or studying at home.
- A light-filled sunny Northerly aspect, neutral decor, polished Cypress pine flooring, down-lights & ceiling fans

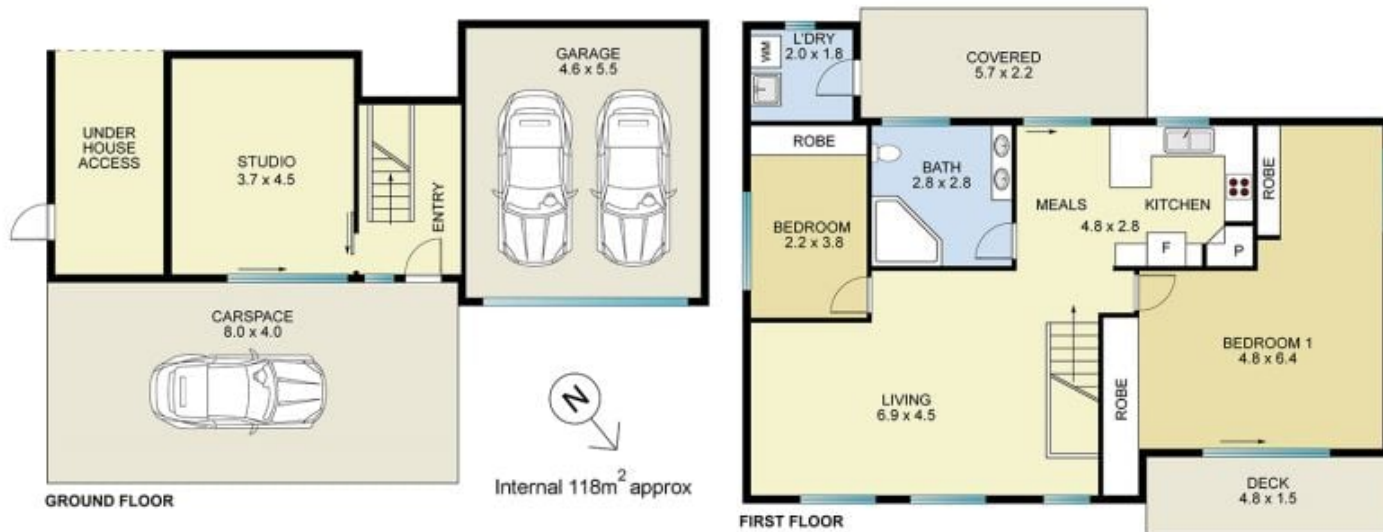
Price : \$ 795,000
Land Size : 670 sqm
View : <https://www.crawfordrealestate.com.au/sale/nsw/newcastle-region/rankin-park/residential/house/7929421>



Phillip Swan
4957 6166



Amanda Swan
02 4957 6166



13 HASLUCK DVE RANKIN PARK

CRAWFORD
REAL ESTATE

All measurements are indicative and shown in metres. It is not an exact replica of the property internally or externally.
Interested parties should not rely wholly on these plans and make their own enquiries.