



142 Russell Road New Lambton NSW

3 1 1

This character filled 3 bedroom home with high ceilings, floorboards and leadlight windows throughout, features:

- * Spacious master with adjoining study, bay window & built-in robe
- * Formal lounge with additional family room that adjoins kitchen
- * Quaint and cosy kitchen with gas cooking & dishwasher that flows to covered outdoor entertaining area
- * Charming bathroom with shower over bath
- * Single lock-up garage with additional off street parking
- * Large north facing return verandah overlooks stunning garden

View : <https://www.crawfordrealestate.com.au/lease/nsw/newcastle-region/new-lambton/residential/house/7973469>



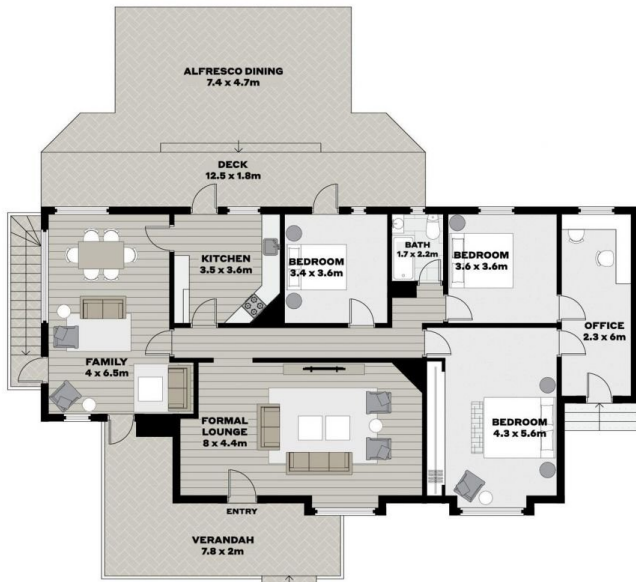
Amanda Swan
02 4957 6166

In close proximity to New Lambton Public School, John Hunter Hospital and village shops located at Regent Street.

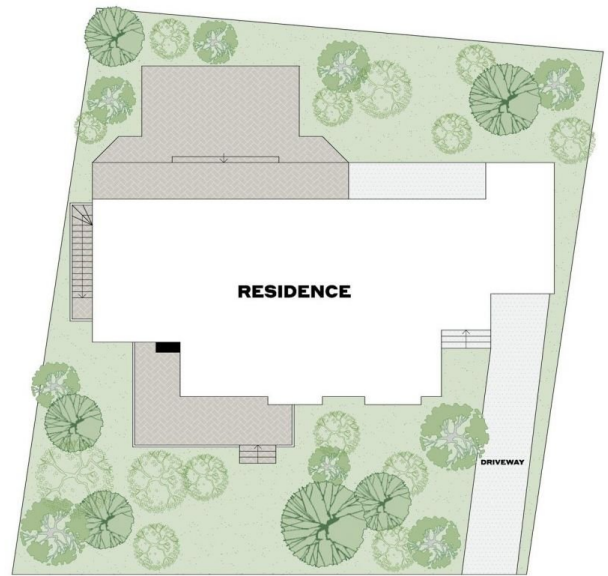
Available approx Friday 9th May, 2024

NO PETS

Only Crawford Real Estate applications accepted



UPPER LEVEL



RUSSELL ROAD



LOWER LEVEL



Internal : 190 sqm
 External : 499 sqm
 Land Area : 696 sqm

All information contained in this document is from sources we believe to be accurate, however we cannot guarantee its accuracy. Interested persons should make and rely on their own enquiries in relation to measurements, dimensions, layout, furniture and descriptions.