



10 Aldyth Street New Lambton NSW

4 2 2

Set on one of New Lambton's premier streets sits this Classic Brick home with all living areas at the rear to capitalise on the sensational sweeping views across Novocastrian Park to the harbour, city skyline, and coastline. This original home complete with a one bedroom self contained multi purpose flat presents a rare opportunity to reside or invest in this exclusive pocket of this highly desirable suburb.

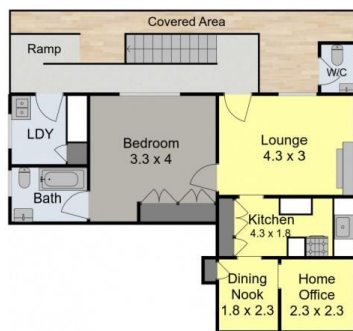
Enter from the tiled front porch to the wide central hallway leading directly to the open plan dining room, living room and kitchen with sliding glass doors leading to the tiled rear terrace which capture the breathtaking views and the cooling breezes. A perfect vantage point to relax, reflect and unwind.

The main home on the entry level comprises THREE double bedrooms 2 with new built-in wardrobes and original bathroom. The kitchen offers dishwasher and 900mm new DeLongi stove for the serious home chef and breakfast area. Adjoining the kitchen is the dining room and spacious interconnecting living room featuring original decorative fireplace and Plantation Shutters.

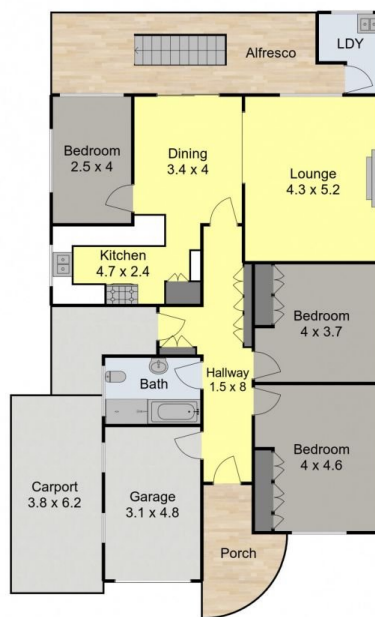
Price : \$1,600,000 - \$1,700,000
Land Size : 490 sqm
View : <https://www.crawfordrealestate.com.au/sale/nsw/newcastle-region/new-lambton/residential/house/7982355>



Margaret Jensen
02 4957 6166



Lower Level



Upper Level



Site Plan

**10 Aldyth Street,
New Lambton**



Measurements are approximate and are to be used as a guide only

CRAWFORD
REAL ESTATE