

## 10 Portland Place New Lambton NSW

3  1  2 

This delightful 3 bedroom period home represents a wonderful opportunity for a new family to secure a well presented and much loved home in this highly desirable location.

From the first impressions of the heritage façade, established hedges and blooming standard Iceberg roses it is clear the current house proud owners have cherished their many years here.

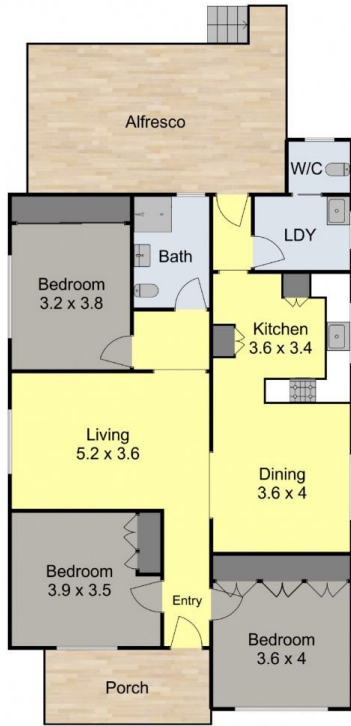
Updated throughout the home offers:

- \*THREE bedrooms - all with generous built in wardrobes.
- \*Central living room interconnecting to the air conditioned dining room and updated kitchen.
- \*Modernised bathroom plus a 2nd wc off the laundry.
- \* High ceilings, original timber floorboards and solid timber doors front and back featuring stunning original stained glass panels.
- \*Sunny north aspect with covered front veranda to sit and enjoy a coffee. Fabulous large rear covered deck for al fresco entertaining and family gatherings overlooking the level grassed backyard.
- \* Ideal sunny north aspect level block approx. 563m2 with

**Price** : Deposit Taken  
**Land Size** : 563 sqm  
**View** : <https://www.crawfordrealestate.com.au/sale/nsw/newcastle-region/new-lambton/residential/house/7983353>



**Margaret Jensen**  
02 4957 6166



Site Plan

10 Portland Place,  
New Lambton



Measurements are approximate and are to be used as a guide only

