



137 Russell Road New Lambton NSW

4 3 1

This Classic Weatherboard and Tile residence offers space and amenity for modern living. Discreetly positioned on a prominent elevated corner site with sweeping district views the home is screened by a traditional white fence and established hedges.

The tiled front porch and recessed entry open to the wide foyer which creates an immediate sense of the space and style beyond. The formal living room with bio ethanol fireplace opens to the East courtyard and gardens. The stunning open plan living spaces are enhanced by a full wall of windows and Louvres with a Northerly aspect to capture the breeze and views with adjoining tiled patio for al fresco meals.

The well designed gourmet kitchen provides extensive bench space, stainless steel appliances, Bosch dishwasher, fridge, abundant storage and walk in pantry.

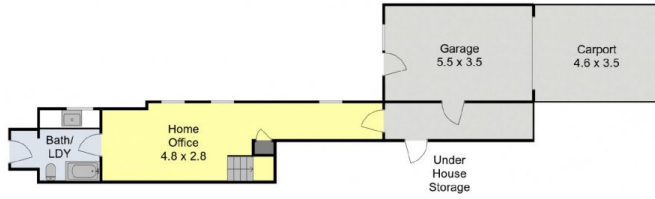
The spacious master bedroom provides an indulgent luxury en-suite and large walk-in robe, Bedrooms 2 and 3 both

Type : House
Land Size : 450 sqm
View : <https://www.crawfordrealestate.com.au/lease/nsw/newcastle-region/new-lambton/residential/house/8253884>

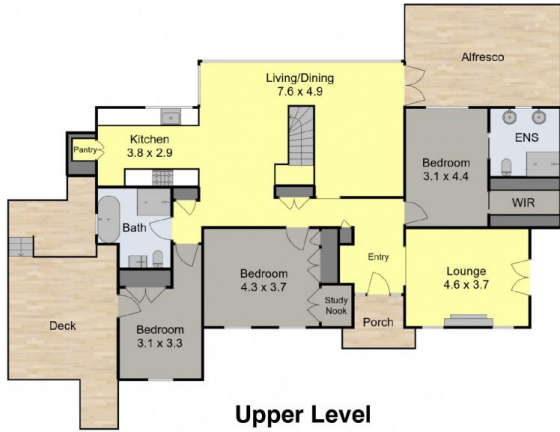


Amanda Swan
02 4957 6166

[For full version visit the website](https://www.crawfordrealestate.com.au)



Lower Level



Upper Level



Site Plan

**137 Russell Road,
New Lambton**



Measurements are approximate and are to be used as a guide only

